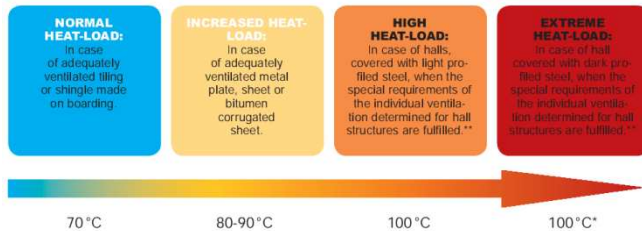


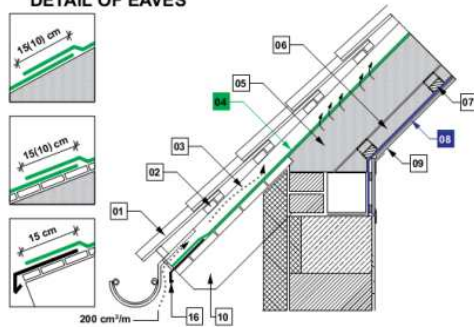
# BODYGARD Membranes

**W1 WATERTIGHTNESS**  
**Sd < 0.3meter**

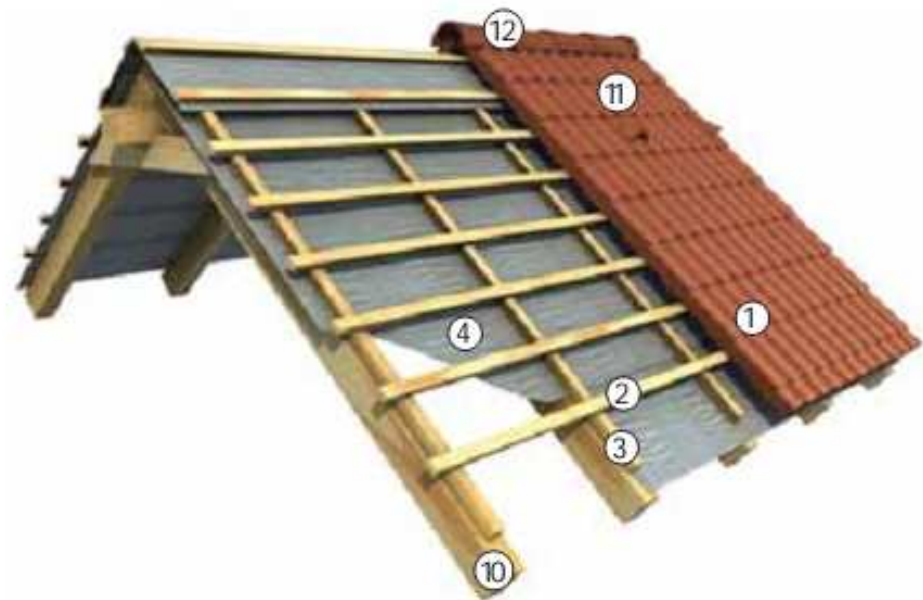
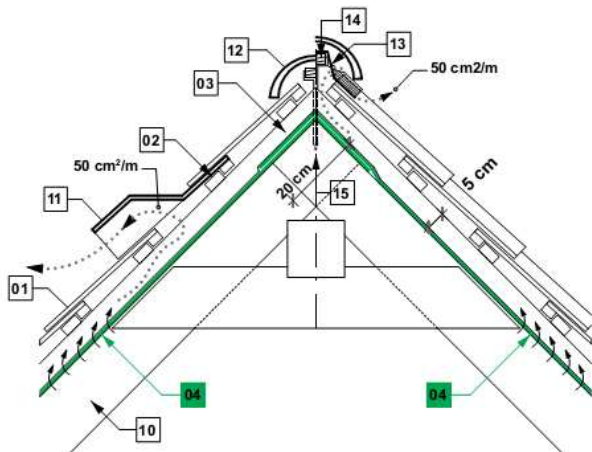


- 01 – Roofing;
- 02 – Tile batten;
- 03 – Counter batten;
- 04 – **underlays;**
- 05 – Thermal insulation among the rafters;
- 06 – Additional thermal insulation under the rafters;
- 07 – Wooden or metal support;
- 08 – Vapour control/vapour barrier layer;
- 09 – Wall finishing (e.g., gypsum plasterboard);
- 10 – Rafter;
- 11 – Ventilating tile;
- 12 – Ridge tile;

DETAIL OF EAVES



DETAIL OF RIDGE



## Main product range

<b>Product name</b>	<b>Colour</b>	<b>Material</b>	<b>Weight</b>
BODYGARD 90	BLACK/white	PP	90 g/m2
BODYGARD 100	BLACK/white	PP	100 g/m2
BODYGARD 130	BLACK/white	PP	130 g/m2
BODYGARD EXTRA	GREEN/white	PP	160 g/m2
BODYGARD SUPER	GREY/white	PP	180 g/m2
BODYGARD HYPER	BLUE/white	PP	200 g/m2
BODYGARD ALU	ALU/grey	PP with ALU	150g/m2

# BODYGARD

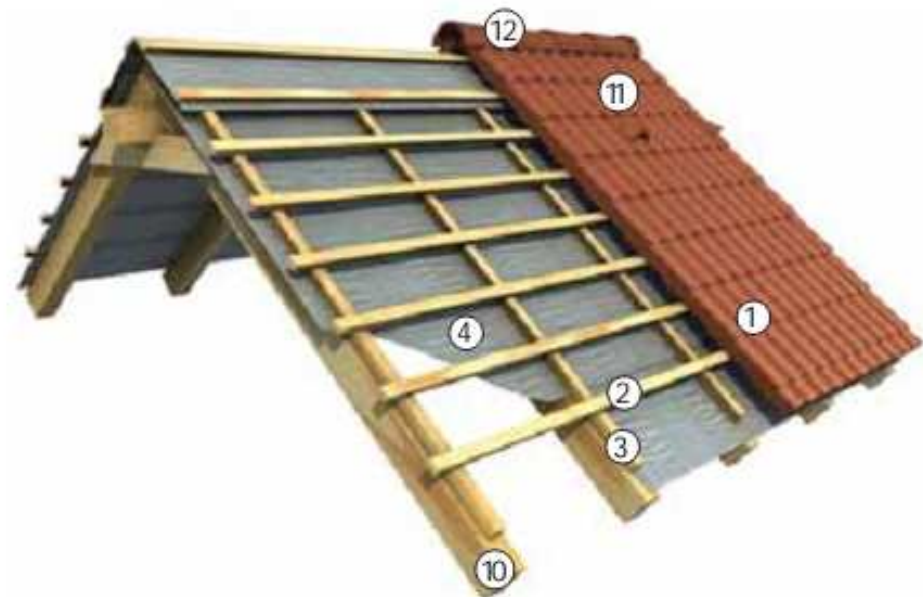
## Main services

Palletization with neutral edge protector

Safety stock, short delivery times

International certification

Product development



# BODYGARD

## FIELDS OF APPLICATION BODYGARD

### 3 BREATHER MEMBRANES

**ECO**



**CLASSIC**



**TOP**



**EXTRA**



**SUPER**



**HYPER**



# BODYGARD

# FIELDS OF APPLICATION

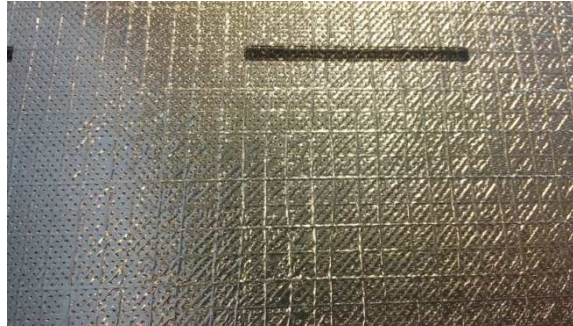
## BODYGARD BREATHER MEMBRANES

### UNDER ROOF TILES WITH LOW ANGLE:

#### BODYGARD THERMO



#### BODYGARD ALU



**NORMAL HEAT-LOAD:**  
In case of adequately ventilated filling or shingle made on boarding.

**INCREASED HEAT-LOAD:**  
In case of adequately ventilated metal plate, sheet or bitumen corrugated sheet.

**HIGH HEAT-LOAD:**  
In case of halls, covered with light profiled steel, when the special requirements of the individual ventilation determined for hall structures are fulfilled.\*\*

**EXTREME HEAT-LOAD:**  
In case of hall covered with dark profiled steel, when the special requirements of the individual ventilation determined for hall structures are fulfilled.\*\*

70 °C

80-90 °C

100 °C

100 °C\*



# BODYGARD

# FIELDS OF APPLICATION

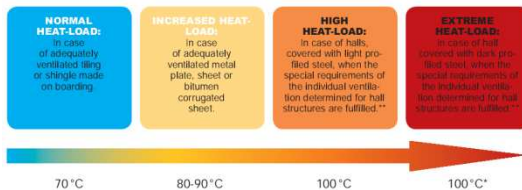
## BODYGARD BREATHER MEMBRANES

### UNDER METAL ROOF TILES:

#### BODYGARD PRO



#### BODYGARD THERMO (SA)



# BODGARD

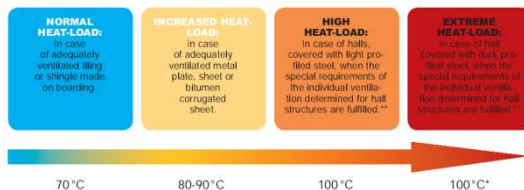
## SPECIAL FIELDS OF APPLICATION METAL INDUSTRIAL BUILDINGS

### SANDWICH PANELS / TRAPEZOIDAL SHEETS:

#### BODYGARD PRO

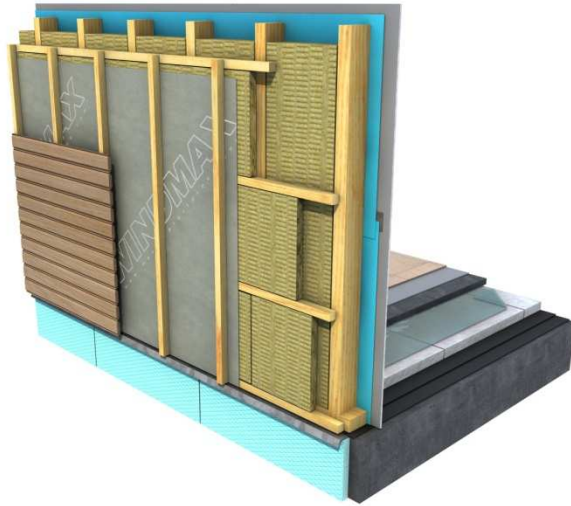


#### BODYGARD ALU



# BODYGARD

# SPECIAL FIELDS OF APPLICATION



## HOUSE-WRAP / WIND BARRIER

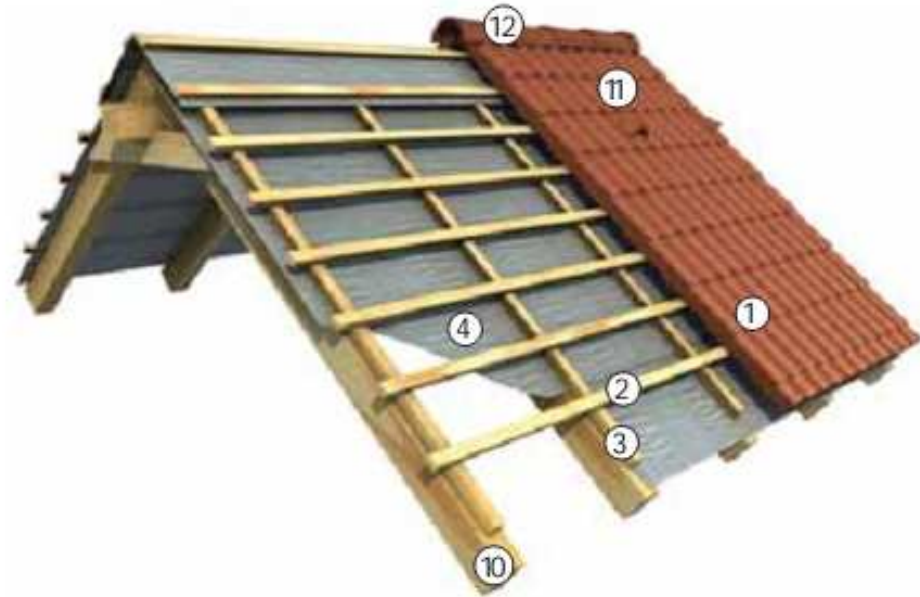
### BODYGARD / HOUSE-WRAP



# Roof underlays

## Non-breather underlays

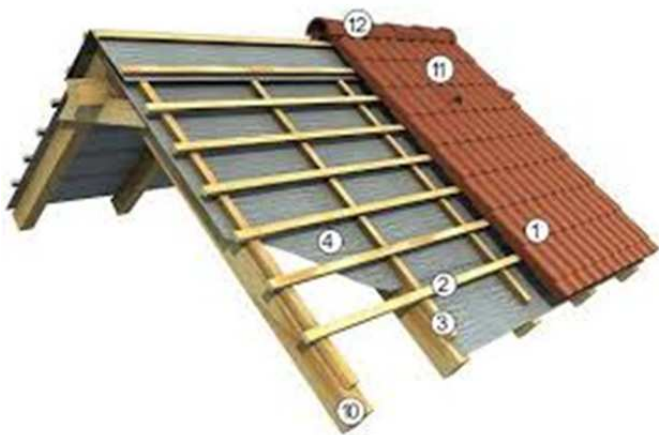
- 01– Roofing;
- 02– Tile batten;
- 03– Counter batten;
- 04– BODYGARD ISO underlays;** 05– Thermal insulation among the rafters;
- 06– Additional thermal insulation under the rafters;
- 07– Wooden or metal support;
- 08 – Vapour control/vapour barrier layer;
- 09– Wall finishing (e.g., gypsum plasterboard);
- 10– Rafter;
- 11– Ventilating tile;
- 12– Ridge tile;



# BODYGARD ISO

# FIELDS OF APPLICATION

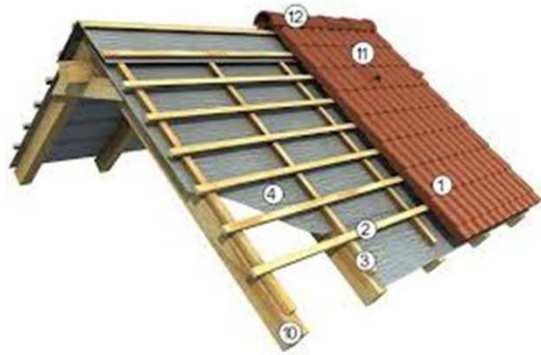
## TRADITIONAL FOILS



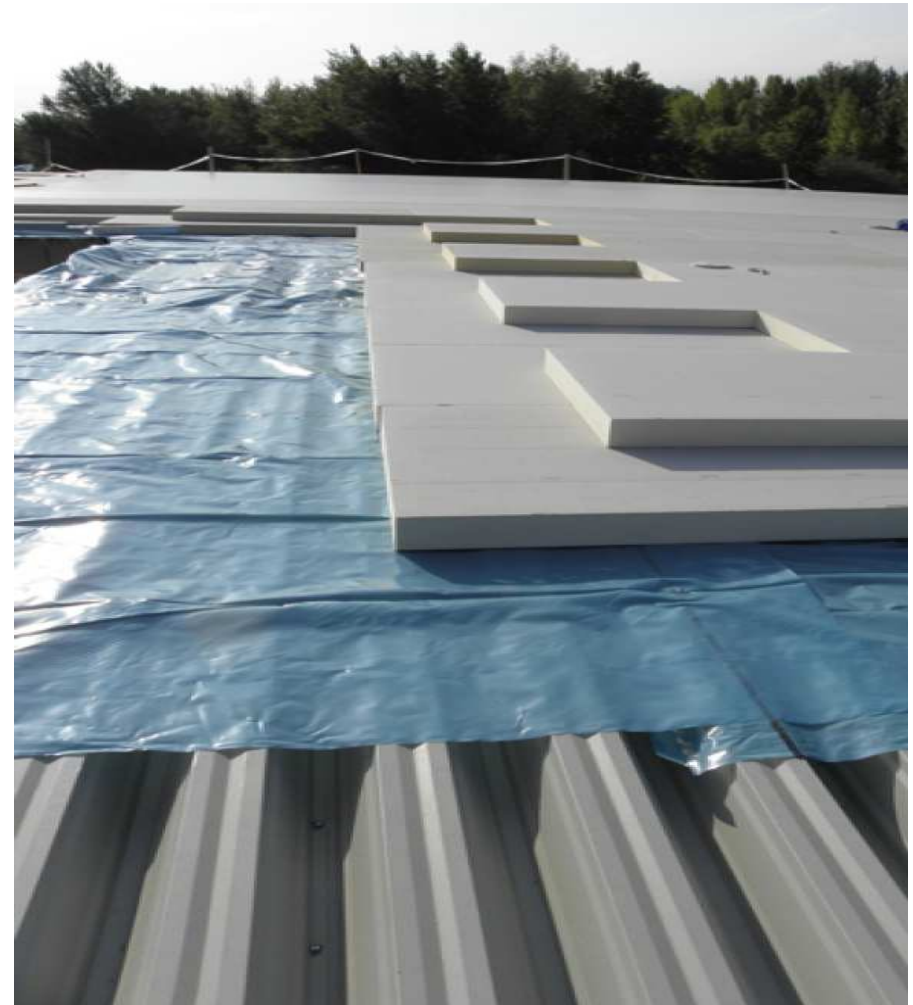
# BODYGARD ISO

# FIELDS OF APPLICATION

## ANTI-CONDENSATE FOILS



## BODYGARD ISO



**BODYGARD ISO**

**FIELDS OF APPLICATION**



**BODYGARD ALU**



**REFLECTIVE VAPOUR BARRIERS**

